

Table 1 Policy Count / Percent High-Risk by Age Band and Face Amount

	0-19	20-29	30-39	40-49	50-59	60+	Total	0 - \$100,000	\$100,001 - \$250,000	\$250,001 - \$500,000	\$500,001 - \$1,000,000	\$1,000,001 +	Total
Number	35	137	603	488	356	312	1,931	195	216	370	659	491	1,931
Percent	3.42	3.74	7.08	6.40	6.45	13.71	6.75	5.26	4.87	5.42	8.64	8.15	6.75
Total	1,024	3,665	8,512	7,621	5,523	2,276	28,621	3,710	4,434	6,832	7,624	6,021	28,621

Figure 1 Total Policies by Age Band with High-Risk Rate

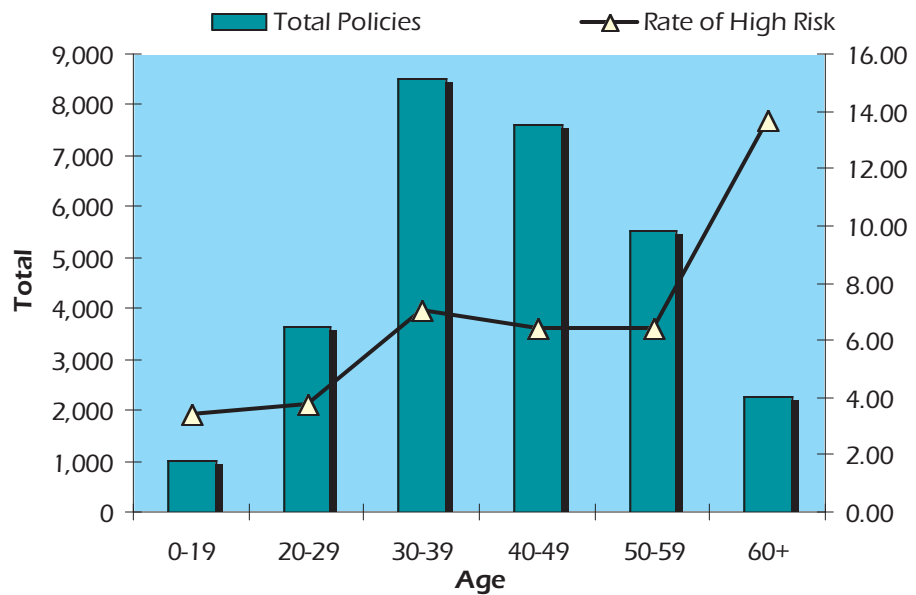


Figure 2 Total Policies by Face Amount with High-Risk Rate

